



148<sup>TH</sup> HERITAGE BANK  
TOOWOOMBA ROYAL SHOW  
29<sup>TH</sup> – 31<sup>ST</sup> MARCH 2012

# 2012

## Photography Schedule

HERITAGE BANK TOOWOOMBA ROYAL SHOW  
3rd NATIONAL EXHIBITION OF PHOTOGRAPHY 2012

*Showing the Downs Since 1860*

T 07 4633 2237    E akucks@tpg.com.au  
www.rasq.com.au    OR For digital entries  
www.toonat.org.au



Conducted by the Toowoomba Photographic Society Inc.



APPROVED EXHIBITION  
APS APPROVAL No 2012/02



# GREAT SECTIONS YOU WILL FIND IN YOUR CHRONICLE!

## Monday

Sports  
Classifieds



## Tuesday

Newspapers in Education (NIE)  
Young Chronicle  
Diva  
Better Business  
Classifieds



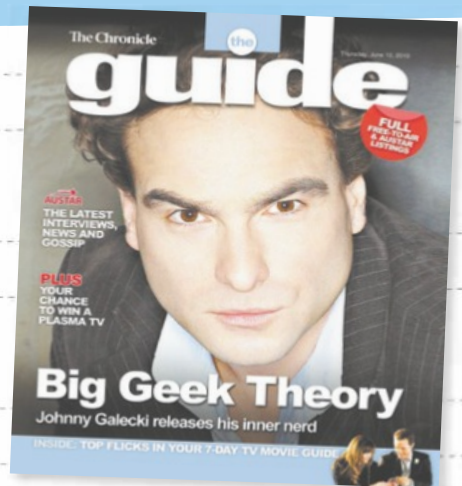
## Wednesday

Junior Sport (JS)  
Heart Beat  
Classifieds



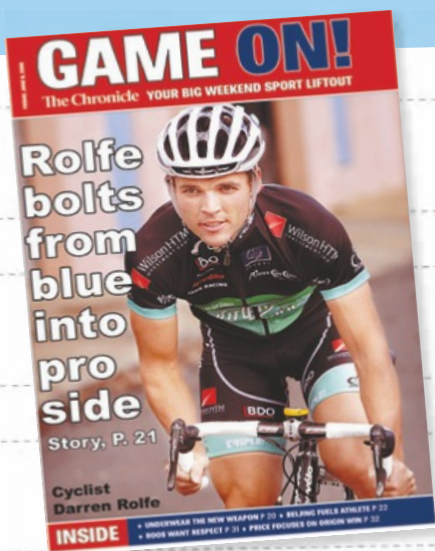
## Thursday

The Guide  
The Crier  
Drive  
Classifieds



## Friday

Game On  
Our Town  
Classifieds



## Saturday

Domain  
MyCareer  
This Weekend  
Our Town  
Classifieds



Call The Chronicle on 1300 361 604 to have 6 Chronicles delivered for \$6.60\* (Toowoomba City only) \*Terms and conditions apply.

The Chronicle



# HERITAGE BANK TOOWOOMBA ROYAL SHOW 3rd NATIONAL EXHIBITION OF PHOTOGRAPHY 2012.

in conjunction with the Toowoomba Photographic Society Inc.

This Approved Exhibition, APS 2012/02, will be conducted according to the recommended practices of the Australian Photographic Society Inc.

PRINTS — DIGITAL IMAGES via CD/DVD

CALENDAR	TOOWOOMBA
Closing Date	2nd March 2012
Exhibition Judging	17th & 18th March 2012
Reports Posted	23rd March 2012
Exhibition Dates	29th, 30th & 31st March 2012
Returns and Catalogues	11th May 2012

**Please send entries  
(prints and CD/DVD's to)**  
HERITAGE BANK TOOWOOMBA ROYAL SHOW  
3rd NATIONAL EXHIBITION of PHOTOGRAPHY 2012  
9 Phyllis Street TOOWOOMBA 4350

Judges	Prints & Digital					
	Open	Creative	Nature	Soc Doc	People	Youth
Bev Lacey Pictorial Editor, Toowoomba Chronicle		•x		•x	•x	
Graham Burstow EFIAP FRPS FAPS HonFAPS				x•	•x	
Graham Harris PSQA			x•		x•	
Joanne Craig-Havern PSQA	•x	x				
Barry Whisson PSQA	•x					x•
John Stewart AAPS SSAPS PSQA			x	•x		
Cindy Laine Dip Photog.	•x	•x				•x
Gerard Saide SSAPS PSQA			•x			x
<b>Alternate Judges</b>						
Norm Luke - Experienced photographer						
Brian Kenny PSQA						

Exhibitions reserve the right to substitute judges if any of the above are unable to fulfil the appointment.

Join the Australian Photographic Society to improve your photography. Enquiries to:  
The Secretary, APS, Suite 4/8 Melville Street Parramatta NSW 2150 Email: [secretary@a-p-s.org.au](mailto:secretary@a-p-s.org.au)

Committeeman in charge:- Mr. Bill Hedger. Ph 07 4639 2222

The Heritage Bank Toowoomba Royal Show 3rd National Exhibition of Photography 2012

Section will be open to the public in the Founders' Pavilion as follows:-

Thursday 29th :- 9.00 am-7.00 pm Friday 30th:- 9.00 am-7.00 pm Saturday 31st March 2012:- 9.00 am-6.00 pm

For information contact Alwyn Kucks - Toowoomba 07 4633 2237 [akucks@tpg.com.au](mailto:akucks@tpg.com.au)

EFTPOS FACILITIES ARE NOW AVAILABLE AT THE OFFICE FOR YOUR CONVENIENCE

FOR EXTRA ENTRY FORMS PLEASE DOWNLOAD FROM THE WEBSITES: [www.rasq.com.au](http://www.rasq.com.au) and [www.a-p-s.org.au](http://www.a-p-s.org.au)



# Heritage Bank



# Conditions of Entry

## GENERAL:

1. Entries will be accepted from residents of Commonwealth of Australia and its Territories, and from APS Members resident overseas.
2. The greatest care will be taken with entries, but no responsibility will be accepted for loss or damage.
3. Print entries must be sent POST PAID. Entry Forms, fees, prints and CD/DVD's may all be sent in the one package. Name and address of sender on outside of packages is appreciated.
4. Entry fees, as detailed on entry form, PLUS RETURN POSTAGE, should be paid by cheque, funds transfer or money order. NO POSTAGE STAMPS PLEASE.
5. Entries, with the official entry form or a photocopy of it, may be submitted.
6. Unless otherwise specified, permission to reproduce entries for publicity purposes will be assumed.
7. Each entrant will receive a Report Card and Catalogue.
8. If a Digital Image is entered in the Digital Image Sections of the Exhibition, the same or a similar image CANNOT be entered in the Print Sections or vice versa.
9. The Exhibition will be conducted in accordance with the recommended practices of the Australian Photographic Society Inc.
10. The return address section at the bottom of the entry form MUST be completed.
11. Any digital manipulation must have been made by the photographer.
12. Images sent by email will not be accepted.
13. All entries must be developed from the Authors own Image files.
14. Images entered in a previous "Heritage Toowoomba Royal Show National Exhibition of Photography" are not eligible to be entered in this competition.
15. A maximum of four (4) acceptances from this Exhibition may be counted towards APS photographic skill honours. (Print and digital acceptances are added together.)
16. The organisers reserve the right to reject any image.

## PRINTS

1. A maximum of FOUR PRINTS may be submitted in each Section.
2. Commercial processed and author processed prints will be accepted. All photographs must have been taken by the entrant.
3. Prints must be mounted: Maximum size, including mount, is 406 mm x 508 mm (16" x 20") in a vertical or horizontal format. Minimum - image/mount size is 25 cm x 20 cm (10 x 8 ins.)
4. Mount thickness should not exceed 4 mm. As anything over that thickness cannot be mounted in the exhibition.
5. The back of each print must bear the **NAME, TITLE, SECTION and NUMBER to correspond with ENTRY FORM.** (Preferably in the top left hand corner), to indicate the top when the print is viewed correctly.
6. All entries must conform to the definition of MONOCHROME AND COLOUR PRINTS as given by the Australian Photographic Society Inc (see definitions)
7. Due to the sticky nature of some inkjet prints, they should have a suitable cover sheet for their protection and to prevent contact with and damage to other prints. A window mount, or matt, may lessen the risk of sticking to other prints or mounts.

## DIGITAL IMAGES.

All details in relation to the Digital Sections, including the entry form, payment of entry fee and process for forwarding the images via CD/DVD can be accessed on the web site-

**[www.toonat.org.au](http://www.toonat.org.au)**

**Entrants to the Youth section must attend a primary or secondary school.**

## AWARDS.

Trophies will awarded in all sections at the discretion of the Exhibition Organisers. Special awards in the form of Gift Vouchers will be made and these will include \$100 for Grand Champion Photograph of Show, \$50 for Champion Print, \$50 for Champion Projected Image (Digital) and \$100 for Junior Champion Photograph of Show.

## DEFINITIONS

### OPEN

Any subject that is treated pictorially, embodying the elements of good design, arrangement or composition, which reflects the personal interpretation of the photographer.

### PEOPLE

Any image involving one or more persons at work, play or at rest. Portrait of a person or persons may be included.

### CREATIVE

"Creative" covers photographs that display a novel effect because of an unusual combination of objects and/or viewpoint. They are images that have been modified during or after exposure. The image must have a photographic base with the original work being exposed by the entrant.

### NATURE

Nature photography depicts living, untamed animals and uncultivated plants in a natural habitat, geology and the wide diversity of natural phenomena, from insects to icebergs. Photographs of animals which are domesticated, caged or under any form of restraint, as well as photographs of cultivated plants are ineligible.

Minimal evidence of humans is acceptable for nature subjects, such as barn owls or storks, adapting to an environment modified by humans, or natural forces, like hurricanes or tidal waves, reclaiming it. The original image must have been taken by the photographer, whatever photographic medium is used. Any manipulation or modification to the original image is limited to minor retouching of blemishes and must not alter the content of the original scene. After satisfying the above requirements, every effort should be made to use the highest level of artistic skill in all nature photographs.

### MONOCHROME PRINTS

Any photograph containing shades of only one colour. If toning is carried out, it must be over the total photograph – partial toning and/or the addition of one extra colour is not acceptable in a monochrome Section.

### SOCIAL DOCUMENTARY (SD)

Concerned with the portrayal and interpretation of society encompassing both human and non-human subject matter.

### COLOUR PRINTS

Any print that is not a monochrome print.

**SUBMISSION OF AN ENTRY FOR THE EXHIBITION IMPLIES AGREEMENT. WITH THESE CONDITIONS.**

Print Entry Fee. \$7.00 per section, plus return Postage.  
Print Youth Fee \$5.00 per section, plus return Postage.

Make Cheques payable to Royal Agricultural Society of Queensland.  
If entering digital images, pay via Cheque, Money Order or Funds Transfer.

Name on Card _____
Signature _____ Expiry Date _____
<input type="checkbox"/> <input type="checkbox"/> <input type="checkbox"/> <input type="checkbox"/> <input type="checkbox"/> <input type="checkbox"/> <input type="checkbox"/> <input type="checkbox"/> <input type="checkbox"/> <input type="checkbox"/> <input type="checkbox"/> <input type="checkbox"/> <input type="checkbox"/> <input type="checkbox"/> <input type="checkbox"/> <input type="checkbox"/>

Account Details Royal Agricultural Society of Queensland BSB: 142001 A/C: 133296800
--

Postal Address for Entries:-

**HERITAGE BANK TOOWOOMBA ROYAL SHOW**  
**3rd NATIONAL EXHIBITION OF PHOTOGRAPHY 2012**  
**9 Phyllis Street**  
**HARRISTOWN Q 4350**

Digital Entries are accepted on CD/DVD. Procedural information is available on the web site  
**[www.toonat.org.au](http://www.toonat.org.au)**

Digital Sections are:- 9 Open, 10 People, 11 Nature, 12 Creative  
and the Youth Digital sections are:- 13 Open & 14 Creative.  
Digital Entry Fee \$11.00 per section & Youth \$5.00 per Section  
We are looking forward to your support for these sections of this  
National Photographic Exhibition.

**THE ROYAL AGRICULTURAL SOCIETY OF QUEENSLAND GRATEFULLY  
ACKNOWLEDGES THE FOLLOWING SPONSORS OF THIS PHOTOGRAPHY  
EXHIBITION**



Graham Burstow, John Stewart,  
Sylvia & Alwyn Kucks

Owen  
**Camera**house

OWEN CAMERA HOUSE  
424 Ruthven St Street  
Toowoomba

# The Chronicle

**Ashburner  
Francis** consulting  
engineers

Designers of innovative, practical and  
sustainable engineering solutions for  
today's environment

BRISBANE TOOWOOMBA TOWNSVILLE  
DARWIN PERTH

**energymenu**  
BY ASHBURNER FRANCIS CONSULTING ENGINEERS

**maintenancemenu**  
BY ASHBURNER FRANCIS CONSULTING ENGINEERS

green building council australia  
MEMBER

[www.ashburnerfrancis.com.au](http://www.ashburnerfrancis.com.au)

TOOWOOMBA PHOTOGRAPHIC  
SOCIETY Inc  
[www.tpsinc.org.au](http://www.tpsinc.org.au)

INTEGRITY PHOTOS  
Clifford Gardens Shopping Centre  
Toowoomba

Mike Horan MLA  
Member for Toowoomba South

**HERITAGE BANK TOOWOOMBA ROYAL SHOW 3rd NATIONAL EXHIBITION OF PHOTOGRAPHY 2012**

Surname (Mr/Mrs/Miss/Ms/Dr). ..... Given Names .....

Photographic Skill Honours ..... Telephone ( ).....

Address ..... Post Code..... State .....

email address..... School attended (Juniors).....

**Print Entry Fees**

\$7 per Section \$.....

Youth \$5 per Section \$.....

Above fees include GST where applicable

Return Postage \$.....

Total enclosed \$.....

I certify that this entry is wholly my own work Signed _____
---

APS Approval Number 2012/02

Are you a member of the  
Australian Photography Society Inc.? **Yes/No**

Cheques, Money Orders etc are to be made payable to: **Royal Agricultural Society Queensland**

ONLY accepted images will be shown (about 1/3 of the total number entered.)

**PRINT SECTION**

Blank	Title	Blank	Blank	Title	Blank
	Section 1			Section 2	
	Soc/Doc Colour or Monochrome Prints			People Monochrome Prints	
	1			1	
	2			2	
	3			3	
	4			4	
	Section 3			Section 4	
	Open Colour/Monochrome Prints			People Colour Prints	
	1			1	
	2			2	
	3			3	
	4			4	
	Section 5			Section 6	
	Nature Colour/Mono			Creative Print Colour or Monochrome	
	1			1	
	2			2	
	3			3	
	4			4	

**YOUTH PRINT SECTION**

For Students of a Primary or Secondary School

	Section 7			Section 8	
	Open Print Colour or Monochrome			Creative Print Colour or Monochrome	
	1			1	
	2			2	
	3			3	
	4			4	

# Toowoomba's Leading Photographic Speciality Retailer

Each Camera House store is individually own and has the buying power of 100 stores across Australia. The advantage of buying from Camera House is we can show you how to use your camera with our one on one camera lessons. We also have a beginners course which runs for a full day. To stay informed with the latest information and competitions why not join our facebook page 'Camera House Toowoomba'. We have regular updates on new products.

**SONY**

- \*Camera Course
- \*Canvas Printing
- \*Poster Printing

- \*Gifting Products
- \*Photo Books(1hr)
- \*CD Burning

- \*Nikon Stockists
- \*Canon Stockists
- \*Photo Restoration



[www.camerahouse.com.au](http://www.camerahouse.com.au)

Camera House Toowoomba

# owen camerahouse

# Ashburner Francis

consulting  
engineers

Designers of innovative, practical and  
sustainable engineering solutions for  
today's environment

BRISBANE

TOOWOOMBA

TOWNSVILLE

DARWIN

PERTH

**energymenu**

BY ASHBURNER FRANCIS CONSULTING ENGINEERS

**maintenancemenu**

BY ASHBURNER FRANCIS CONSULTING ENGINEERS



green building council australia  
MEMBER

[www.ashburnerfrancis.com.au](http://www.ashburnerfrancis.com.au)

Heritage Home Loans

# This is getting a little embarrassing.



Heritage has won more Canstar Cannex 5 star rated home loans than any other financial institution in Australia.



*People first.*

Switch now to an award-winning Heritage home loan and you could **save thousands.**

To approved applicants only. Fees, charges and conditions apply. Heritage Bank Limited. ABN 32 087 652 024. AFSL/ACL No. 240984. DMS 1109091C

Call your local branch or 13 14 22  
[heritage.com.au](http://heritage.com.au)

